

# Guides Polyethylene



## Guides Polyethylene HMW

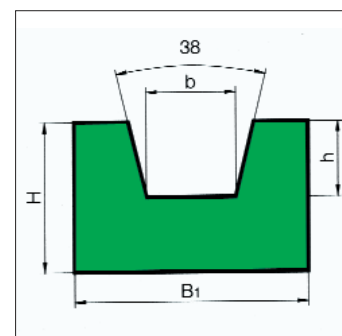
Slideways in green and black antistatic polyethylene. The molecular density polyethylene used for slideways is 1,000,000. This quality (HMW PE) is especially appreciated for its characteristics: wear resistance and fluidity: ideal as sliding guide for V-belts, round, toothed, flat and chain.

Technical characteristics	PE HMW
Density (g/cm <sup>3</sup> )	0,94
Tensile strength at 23°C (N/mm <sup>2</sup> )	44
Tensile elongation at break to 23° C (%)	450
Tensile strength at 120° C(N/mm <sup>2</sup> )	22
Tensile elongation at break at 120° C (%)	800
Resistance to bending (N/mm <sup>2</sup> )	28
Hardness (Shore D)	65
Wear resistance (ml/mm)	145

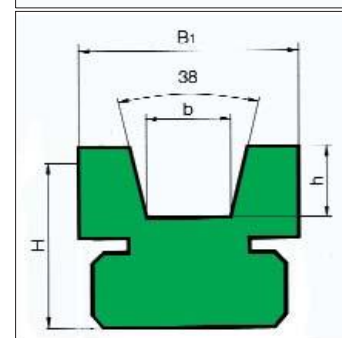


## Guides for V-Belts

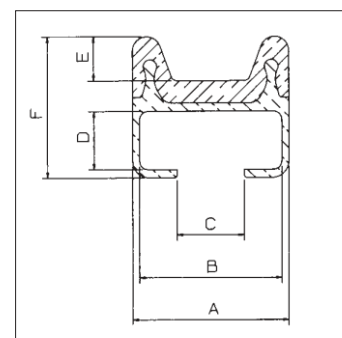
Model	Section	B1	H	b	h	Weight Kg/mt
VP – 8	M/8	20	10	6.0	3.5	0.17
VP – 10	Z/10	20	10	7.2	4.5	0.16
VP – 13	A/13	20	12	9.2	6.0	0.17
VP – 17	B/17	30	15	11.5	8.0	0.33
VP – 22	C/22	35	20	14.5	10.5	0.49
VP – 32	D/32	50	30	21	16	1.04



Model	Section	Prepared for type steel profile	B1	H	b	h	Weight Kg/mt
VPC – 8	M/8	C 3	20	10	6.0	3.5	0.14
VPC – 10	Z/10	C 3	20	15	7.2	4.5	0.21
VPC – 13	A/13	C 3	20	15	9.2	6.0	0.19
VPC – 17	B/17	C 5	30	18	11.5	8.0	0.38
VPC – 22	C/22	C 9	35	25	14.5	10.5	0.63
VPC – 32	D/32	C 12	50	35	21	16	1.51



Code	Code upper profile	Section	E	F	Length of the bars (mt)	Weight Kg/mt
020005004	400051	B	8	25.5	6	0.51
020005004/1	400051/1	B	8	25.5	3	0.51
020005001	400037	C	8	25.5	6	0.51
020005001/1	400037/1	C	8	25.5	3	0.51

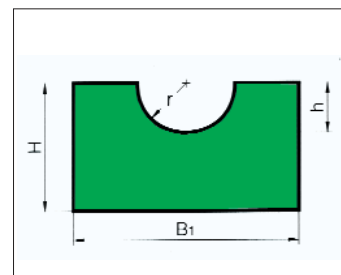


# Guides Polyethylene

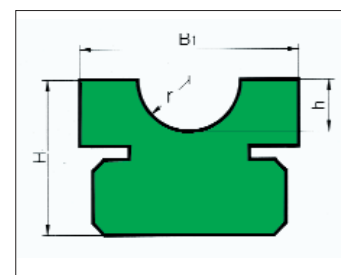


## Guides for round belts

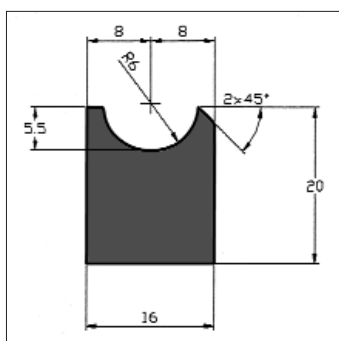
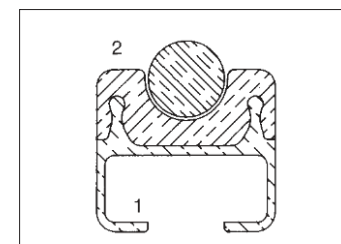
Model	Diameter	B1	H	h	r	Weight Kg/mt
RP - 5	5	20	10	3	3	0.18
RP - 6	6	20	10	4	4	0.17
RP - 8	8	20	10	5	5	0.20
RP - 10	10	25	12	6	6	0.30
RP - 12	12	25	12	8	7	0.49
RP - 15	15	35	20	10	9	0.70
RP - 18	18	40	25	12	10	0.78



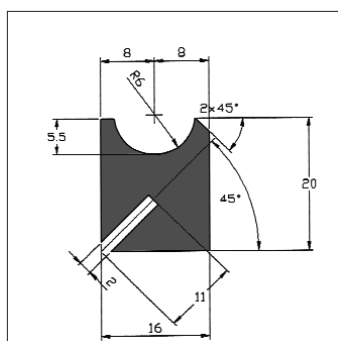
Model	Diameter	Prepared for the type steel profile	B1	H	h	r	Weight Kg/mt
RPC - 5	5	C 3	20	10	3	3	0.14
RPC - 6	6	C 3	20	10	4	4	0.22
RPC - 8	8	C 3	20	10	5	5	0.21
RPC - 10	10	C 5	25	15	6	6	0.30
RPC - 12	12	C 5	25	15	8	7	0.30
RPC - 15	15	C 9	33	20	10	9	0.50
RPC - 18	18	C 9	38	25	12	10	0.49



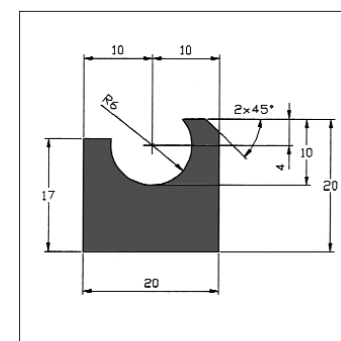
Code	Code upper profile	Diameter	E	F	Bar length (mt)	Weight Kg/mt
020005006	400056	8	4.5	25.5	6	0.57
020005006/1	400056/1	8	4.5	25.5	3	0.57
020005005	400055	10	5.5	25.5	6	0.55
020005005/1	400055/1	10	5.5	25.5	3	0.55
020005002	400038	12	6.5	25.5	6	0.53
020005002/1	400038/1	12	6.5	25.5	3	0.53



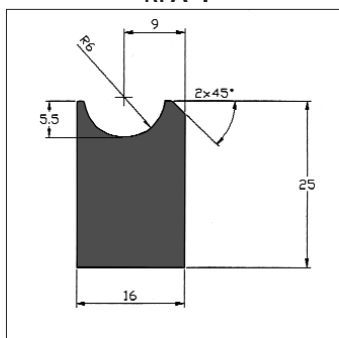
RPA-1



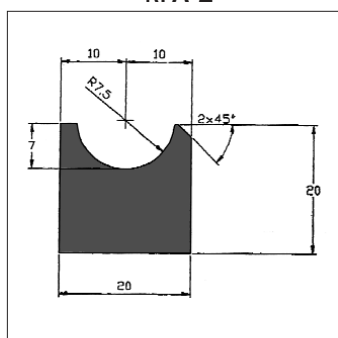
RPA-2



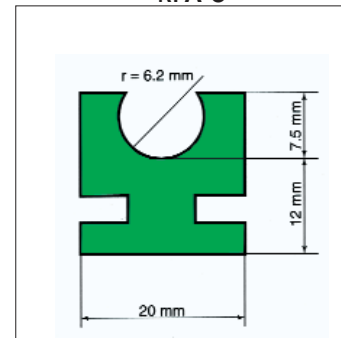
RPA-3



RPA-4



RPA-5



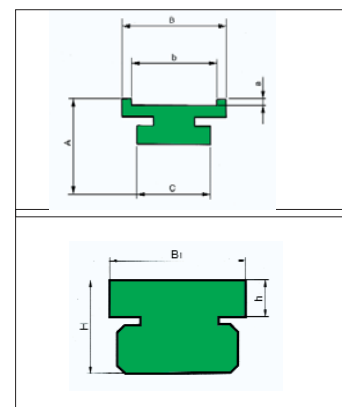
RPAC-1

# Guides Polyethylene

## Guide for timing belts

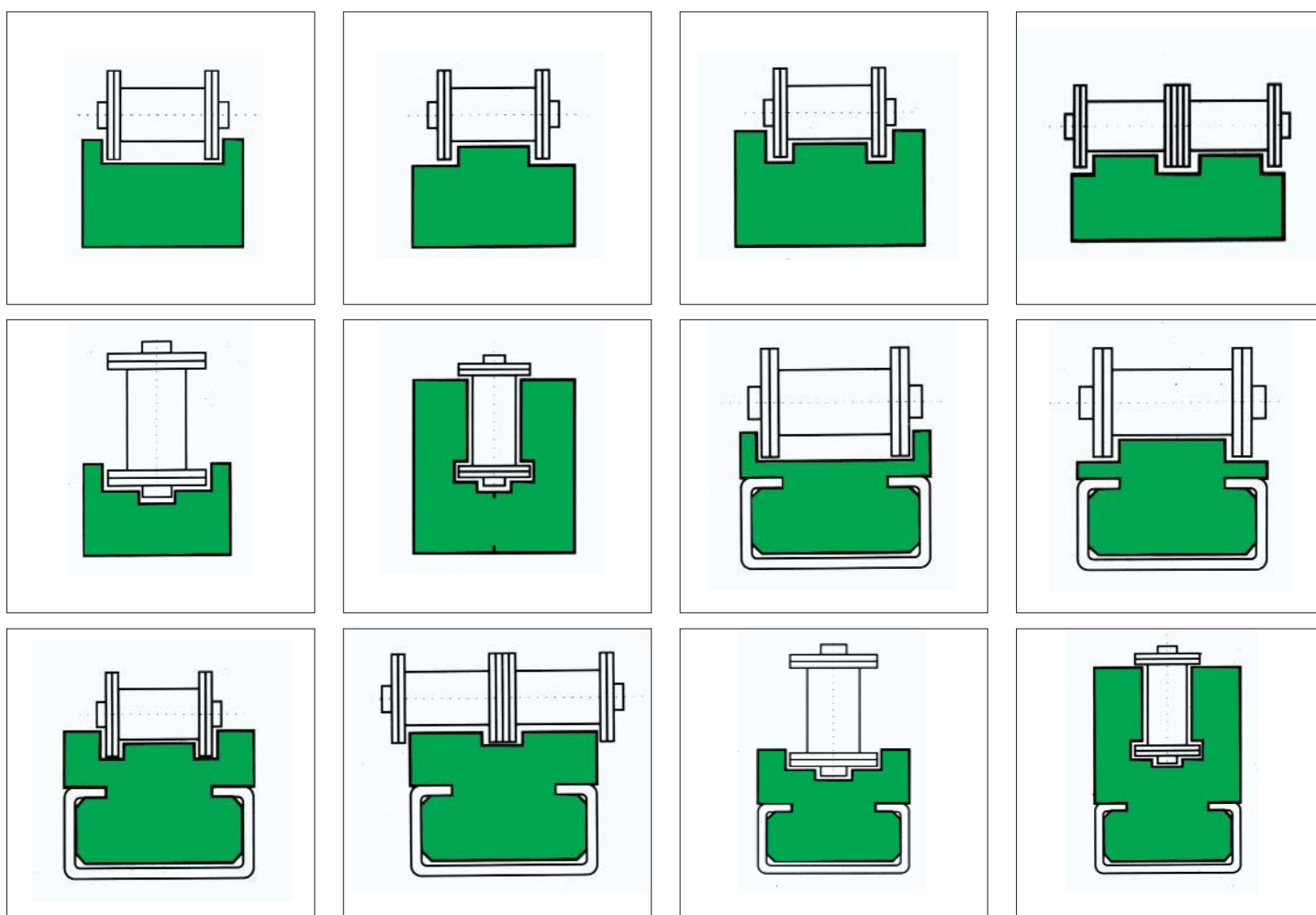
Model	Prepared for the type steel profile	b	B	a	A	C
TPC – 20	C 5	20	28	2,5	15	24
TPC – 29	C 5	29	35	3	15	24
TPC – 34	C 5	34	40	3	15	24
TPC – 40	C 5	40	46	3	15	24

Model	Prepared for the type steel profile	B1	B2	H	h
FPC – 1	C 3	20	20	10	4
FPC – 2	C 3	20	20	15	7
FPC – 3	C 3	20	20	20	12
FPC – 4	C 5	28	28	10	3
FPC – 5	C 5	28	28	15	6
FPC – 6	C 5	28	28	20	12
FPC – 7	C 9	38	38	10	3
FPC – 8	C 9	38	38	15	6



## Guides to current

Sliding guide HMW polyethylene for roller chains



# Guide and Profile

## Profiles for side guides

PE

Profiles for PE side to be applied on metal guides 2 mm profiles. Available in 20 mm height, 33 mm and 40 mm.



## Flat strip polyethylene

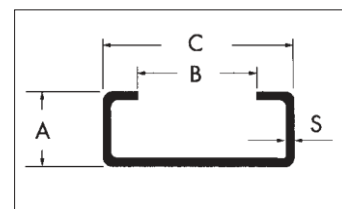
PE

Profiles of rectangular section of green polyethylene HD (1,000,000) and black polyethylene MD (500,000). They are available with thicknesses of 2 mm to 5 mm and various widths up to 120 mm.

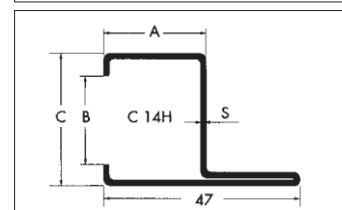


## Metal Profiles

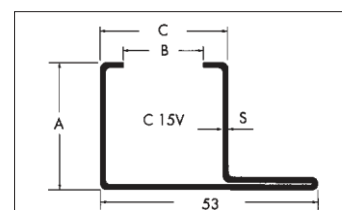
Galvanized Profile	Kg/ mt	A	B	C	S
C 1	0.28	5.5	17.5	24	1
C 3	0.49	10	10	20	1.5
C 5	0.82	12	14	28	2
C 9	1.43	18	22	38	2.5
C 12	2.15	20	36	60	2.5



Galvanized Profile	Kg/ mt	A	B	C	S
C 14 H	1.73	25	20	31	2
C 15 V	1.90	25	20	31	2



Galvanized Profile	Kg/ mt	A	B	C	D	Bar length (mt)
400036	0.35	12.5	28	14.5	21.4	6
400036/ 1	0.35	12.5	28	14.5	21.4	3



Profile	Material	A	B	C	D	S	Section	Bar length (mt)	Weight Kg/mt
400110	Aço zincado	21	8	1.2	13	28	B	6	0,763
400110/A	Inox AISI 304	21	8	1.2	13	28	B	6	0,763
400111	Inox AISI 304	21	8	1.2	13	28	B	3	0,763
400111/A	Inox AISI 304	21	8	1.2	13	28	B	3	0,763
400108	Inox AISI 304	21	8	1.2	13	28	C	6	0,763
400108/A	Inox AISI 304	21	8	1.2	13	28	C	6	0,763
400109	Inox AISI 304	21	8	1.2	13	28	C	3	0,763
400109/A	Inox AISI 304	21	8	1.2	13	28	C	3	0,763

